

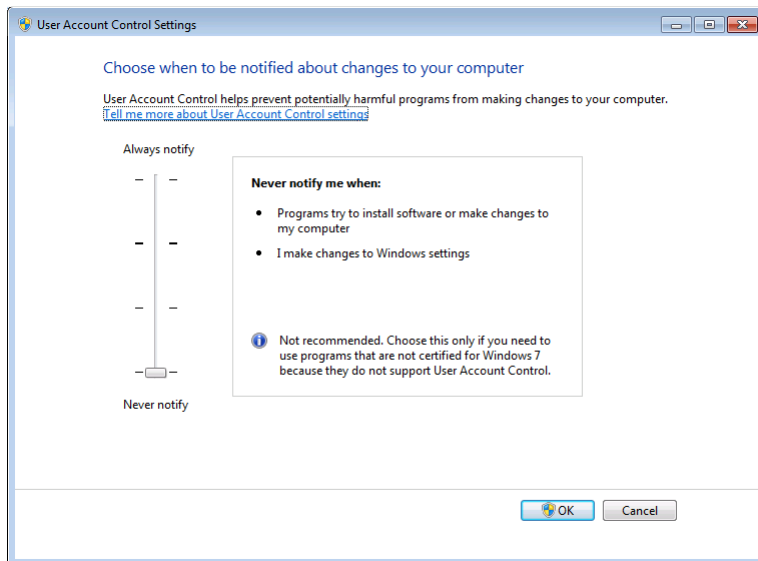
# TeleScript ProNEWS: Installation, Optimization, Connection and Operation (Windows 7)

## Prepare computer

### Login with Administrator Privileges

This will assure access to the Registry Hives where ProNEWS setup data is stored.

**Disable User Account Control:** Click the start button, type “User Account Control” <Enter> to display this dialog:



Move the slider to the bottom – “never notify”.

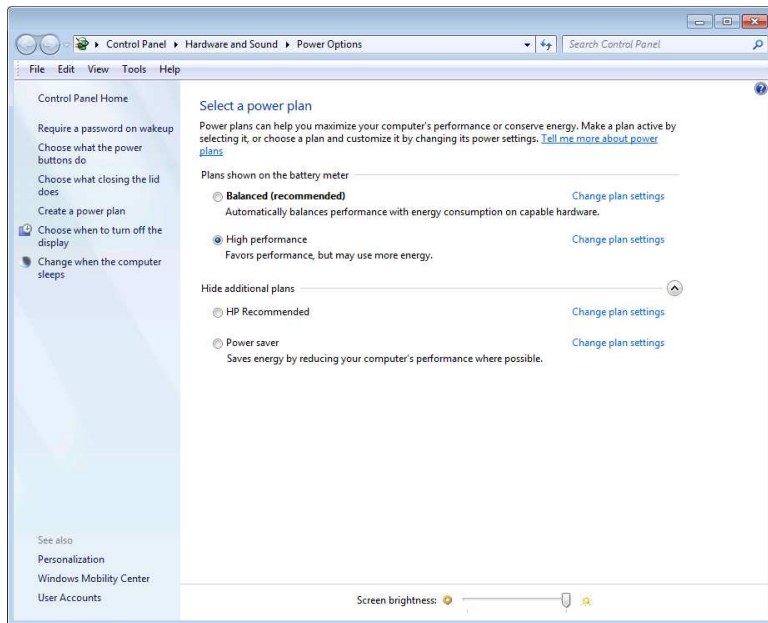
### *Disable the Screen Saver / Set Power Options*

**Disable Screen Saver:** Right click on the desktop and select “Personalize”. Click the “Screen Saver” link found at the lower right of the Personalization Dialog to display the Screen Saver Settings Dialog:

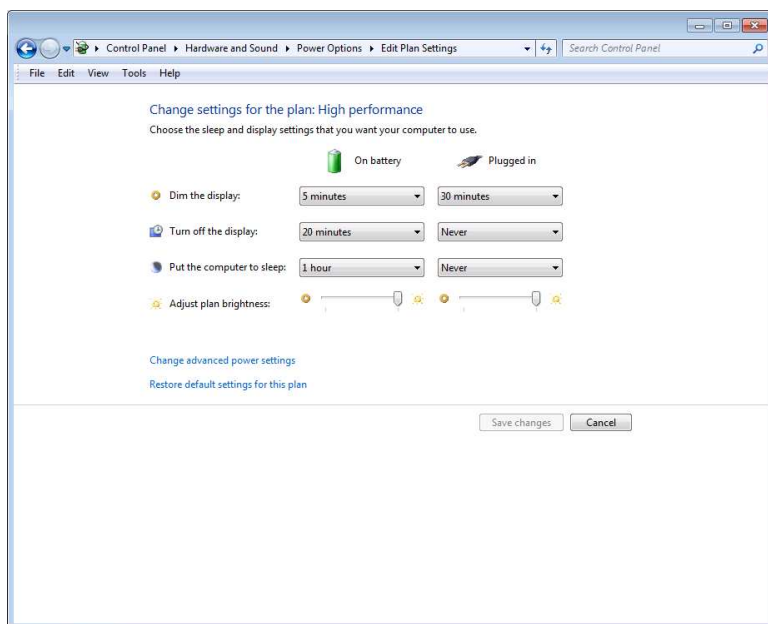


Using the Screen Saver Combo Box, select “(None)” for Screen saver.

**Configure the Power Settings:** Click the “Change power settings” link to display the power options dialog:



Select “High performance”, and then click “Change plan settings”. (If “High performance” is not listed in the top section under “Plans shown on the battery meter”, then click the expand arrow beside “Show additional plans”. The example above has the additional plans shown.)

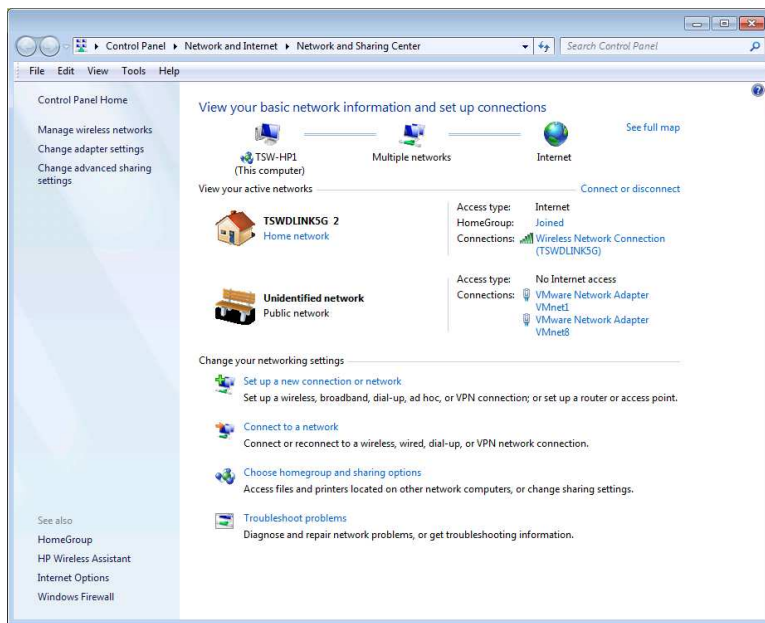


Set all settings to “Never” – none of these actions are acceptable while prompting.

Click “Save changes”, then exit from all the open dialogs.

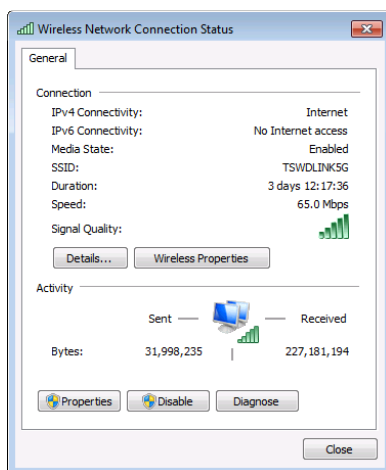
### ***Enable and Connect to the network***

Click the Start button, and in the search box, type “Network and sharing center” to open the dialog box shown.

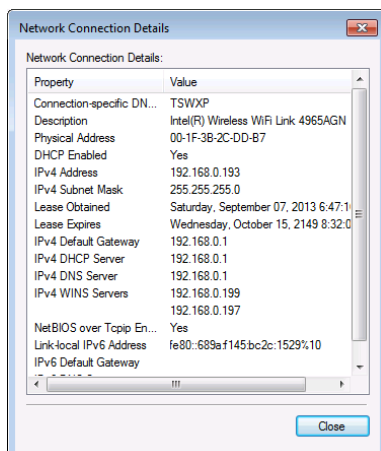


If you have not yet connected, click “Connect to a network” and select the appropriate wired or wireless network. The network administrator should be able to assist with this.

**Determine the IPv4 Address:** Once connected, click on “Wireless Network Connection” (for wireless), or “Local Area Connection” (wired).



Click “Details” to display “Network Connection Details”:



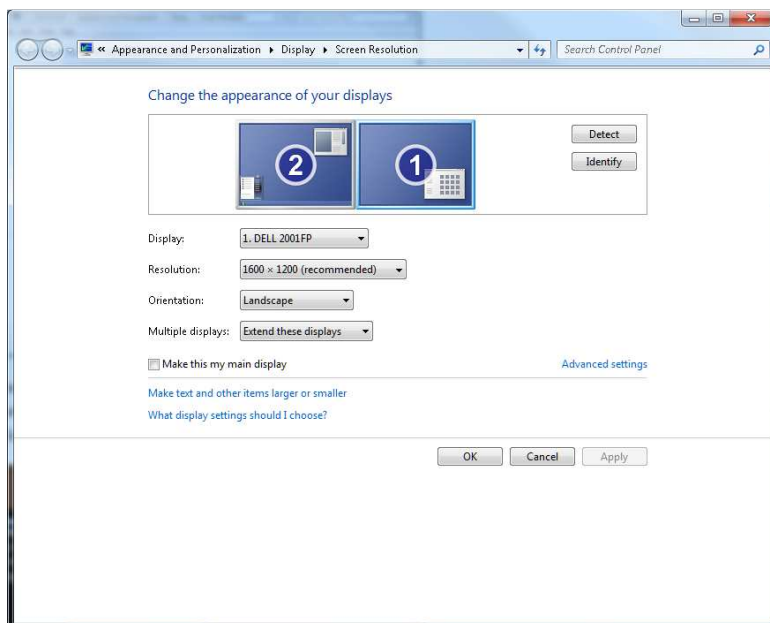
**Write down the IPv4 address...** this will be required for connection to ENPS or other Newsroom Computer System (NCS). In the example above, the required IP is 192.168.0.193.

NOTE: If a true “Static” IP address is not available, ask the network administrator to **reserve** an IP for this computer. Allowing the DHCP Server to assign a **variable address** is **not acceptable** for MOS/NCS connections.

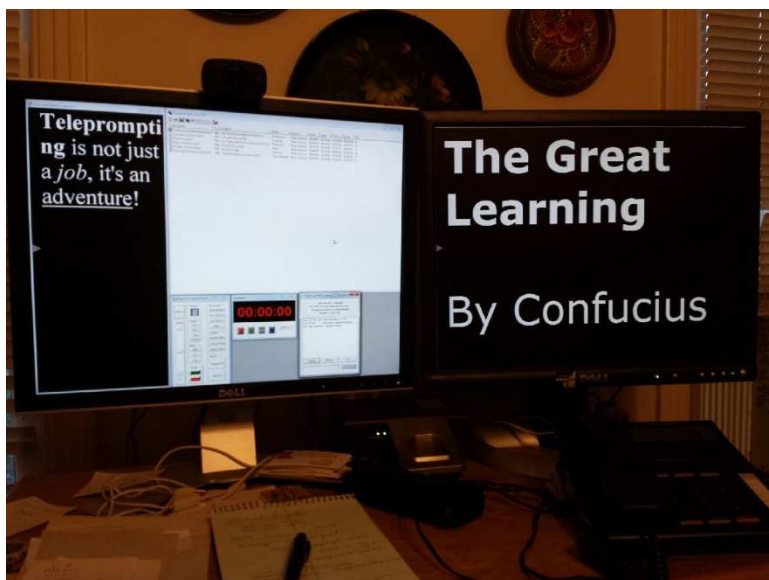
The prompting computer (MOS Object) must be visible to the NCS/NOM Server (ENPS News Object Manager), and vice versa. Setting up a network is beyond the scope of this document. The local network administrator should be able to help.

### ***Configure the Display Properties – Extended Monitor Setup***

Right click on the desktop and select “Screen resolution” to display this dialog.



**Extend the Displays:** The best configuration for TeleScript ProNEWS is to extend the desktop across two monitors. This allows the operator to place the runlist, and other accessories on the primary monitor. The extension monitor is used for the scrolling text, as shown in the picture below.



In the Screen Resolution Dialog, in the combo box labeled “Multiple displays:”, select “extend these displays”. Position the extended display to the right of the primary display. For best results, match the upper left corner of the extended display with the upper left corner of the primary display. For use with TeleScript ProNEWS, the extended display may be *smaller*, but not *larger* than the primary display.

You can now close the Screen Resolution dialogs.

### **Configure the Display Properties – Single Monitor**

**NOTE: Single Monitor operation is not recommended for ProNEWS since many of the features designed to assist the operator are not accessible in this mode. Use single monitor mode only if there is no alternative.**

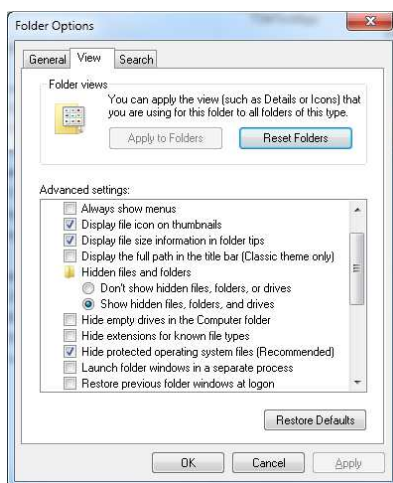
**Set Clone Mode:** Right click on the desktop and select “Screen resolution” from the drop down menu. To display the “Screen Resolution Dialog Box”. In the combo box beside “Multiple displays”, select “Duplicate these displays”. Click on the image of the monitor that will display the teleprompter. Then check the box that says, “Make this my main display.”

**NOTE: Duplication, or cloning, displays is done by forming the image in the primary buffer of the video adapter, then rapidly copying the data to the regen buf of the secondary video adapter. Because genlock doesn’t commonly exist in computer video adapters, the video adapters do not have synchronized vertical blanking – the secondary monitor will display a “sync artifact”. This is mathematically inevitable. It’s best that the artifact appear on the operator’s monitor, not the talent monitor.**

You can now close the Screen Resolution dialogs. See the screen shots in the previous section.

### **Set File Folder Options to show file extensions**

**Open the Control Panel:** Click Windows Start and type “folder options” in the search box. In the Folder Options dialog, click the “View” tab.



Clear the check box beside “Hide extensions for known file types, then click OK, or Apply/OK.

## **Install TeleScript ProNEWS**

Do these steps before plugging-in the security key and the USB controller.

**Install the program files:** Use the CD-ROM, or use the single file installer available at:

<http://www.telescriptservice.com>

**Run the Sentinel Protection Installer:** Go to Windows Start/All Programs/Telescript/TeleScriptProNEWS, then select “Sentinel Protection Installer 7.6.x”.

**NOTE:** If you have previously installed the Sentinel Protection Driver on this system, the installer will display a dialog asking if you want to “Modify, Repair, or Remove” the previous installation. “Repair” is a safe choice if you’re not sure whether the proper version is installed, or if there are other uncertainties. You may have to restart the machine after finishing the install.

**Insert the Security Key:** Once the Sentinel Protection Installer has completed, and the computer is stabilized if restarted, then insert the USB security key and wait while Windows associates the driver with the hardware. When it has completed the process, you’ll see the familiar balloon notification, “Your new hardware is ready to use.”

**Using a Timed Demo Registration Code:** If you have arranged with TeleScript West Technical Service to operate with a limited time Registration Code, please visit:

[TeleScript ProNEWS Temporary Registration Code](#)

**Plug in the USB controller:** Attach the USB controller to a USB port and wait while Windows associates the hardware with the driver. Again, you’ll see the balloon notification, “Your new hardware is ready to use.”

**NOTE:** Windows installs the controller using a Virtual Serial Port. Serial Ports are allowed to be numbered from COM1 to COM255. Check the device manager under “Ports” to verify the port number of the hand control. If the number is higher than COM16, a registry value must be edited to allow checking higher serial ports. The registry key:

HKCU/Software/Telescript/TeleScript Pro News/6.1/ SctrlPortMax

...may be set to allow checking of higher serial ports. If you don’t have experience or are not comfortable editing registry settings, please contact TeleScript Software technical service.

**Start TeleScript ProNEWS:** You may now launch TeleScript ProNEWS using the desktop icon placed by the installer.

## Configure TeleScript ProNEWS for NCS connection

**NOTE:** The basic steps for connection are described in these documents:

For MOS-Clients:

C:\Program Files (x86)\Telescript\TeleScript Pro NEWS\MOS-Gateway\TeleScript-ENPS.pdf

For iNews connection:

C:\Program Files (x86)\Telescript\TeleScript Pro NEWS\MOS-Gateway\Telescript-iNEWS.pdf


These documents are placed on the computer during installation.

This section should be considered an adjunct describing recent changes in ProNEWS, ENPS, or iNews.

**Start TeleScript ProNEWS:** Be sure the security key is in place, and that the hand controller is connected.

**Run as Administrator:** Right click the desktop icon and select “Run as Administrator”. Whether by oversight or by design, Windows 7 Professional disallows certain access to programs REGARDLESS of the User’s account. Only by “Run as administrator” are these limitations overcome.

**Open the Sample Runlist:** From the opening screen, select “Open Runlist...”. Navigate to MyDocuments/TeleScriptProData/Scripts, and select “ExampleScripts-Tpro.trl” from the list displayed. Then click “Open”.

**Set the Default Window Arrangement:** From the top level menu, select “Window/Arrange Horizontal”. Alternately, you may click this icon in the toolbar , or use the keyboard accelerator, <Ctrl+Alt+H>. This is a good starting point for examining the screens.

In this arrangement, in the upper left is the first script in the runlist, “Confusiou...”. You can move or size this script to any location within the TeleScript ProNEWS desktop.

**NOTE: At any time, you can return all windows to their “default” position by pressing <Alt+F3>, or <Ctrl+Alt+D>.**

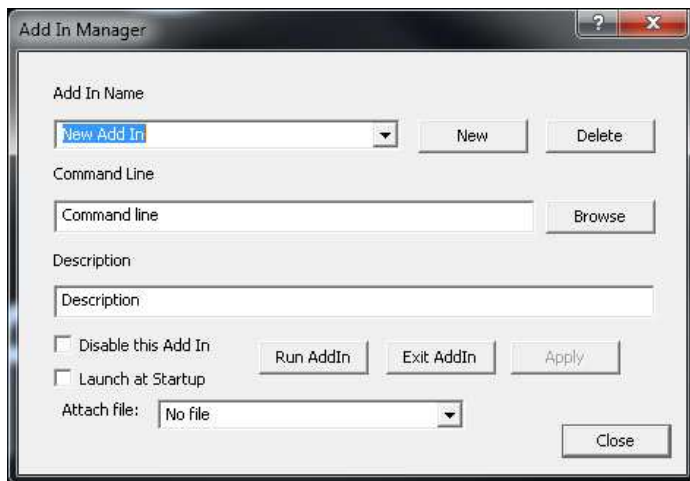
**The Basics:** TeleScript ProNEWS has detailed <F1> help. This help consists of two sections: 1) Tutorial; and 2) Reference. Read the Tutorial for a introduction to Runlist, Scripts, Editing, Loading, Saving, and basic Prompting. These topics are the same for TeleScript Pro and ProNEWS.

**Quick Help:** Many TeleScript ProNEWS dialog boxes provide “Quick Help”. Click the “?” in the upper right (near the close gadget) and then click an item in the dialog box. A balloon with quick help will appear.

### *Set Options for ProNEWS / MOS-Gateway / iNews Gateway*

Refer to the above mentioned documents for basic ProNEWS / gateway configuration. This section deals with how to configure the gateways as an AddIn, using the AddIn Manger, to run the gateway at startup.

**The AddIn Manager:** Start the AddIn Manager by selecting “Tools/AddIn Manager...” from the Script or Runlist menus. This will display the AddIn Manager Dialog.



1. Click “New” and in the Combo Box, type “MOS-Gateway”

2. In the command line, click Browse, and then navigate to:

64 Bit Windows: C:\Program Files (x86)\Telescript\TeleScript Pro NEWS\MOS-Gateway\enps2tpro.exe

32 Bit Windows: C:\Program Files\Telescript\TeleScript Pro NEWS\MOS-Gateway\enps2tpro.exe

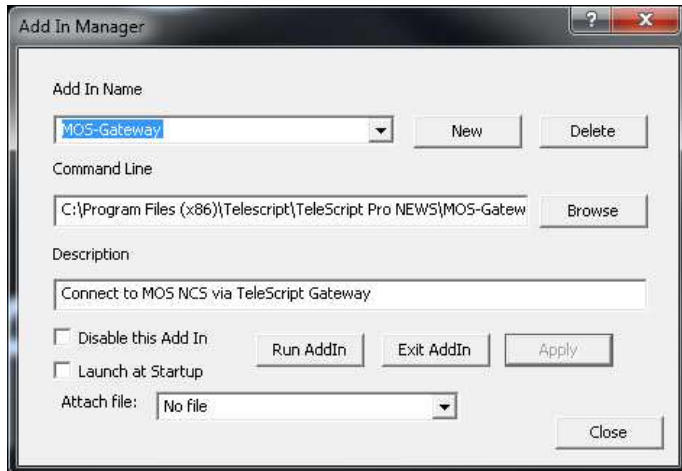
..then click “Open”.

3. Under “Description” type something such as “Connect to MOS NCS via TeleScript Gateway”

4. Leave “Launch at Startup” unchecked. If you are using ONLY the MOS-Gateway, then you can check this box later.

5. Click “Apply” to save your AddIn.

The completed AddIn box should like like this:



**Add the iNews Gateway:** Perform the same steps to add the iNews Gateway as a selectable plug-in.

Close the AddIn Manager dialog box.

### *Open the MOS-Gateway*

**Open the MOS-Gateway or iNews-Gateway:** From the Script or Runlist top level menu, select “Tools/AddIns/MOS-Gateway” or “Tools/Addins/iNews-Gateway”. **AddIns should also be closed from this menu.**

### *Configure the Gateways*

Use the information in the two supplied .PDF files:

**For MOS-Clients:**

**C:\Program Files (x86)\Telescript\TeleScript Pro NEWS\MOS-Gateway\TeleScript-ENPS.pdf**

**For iNews connection:**

**C:\Program Files (x86)\Telescript\TeleScript Pro NEWS\MOS-Gateway\Telescript-iNEWS.pdf**

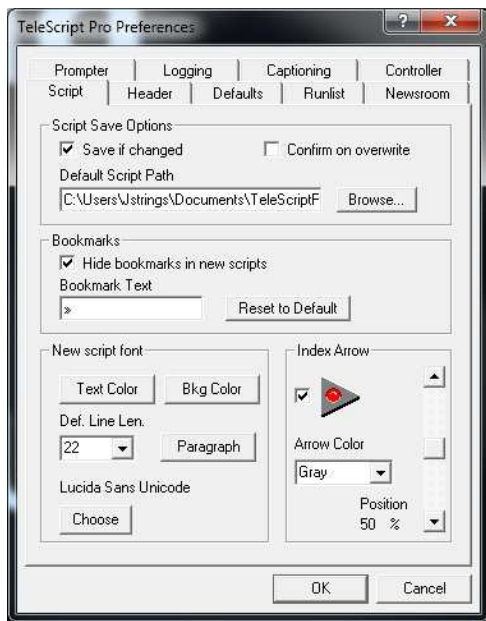
A document is also supplied for the Octopus NCS. There is no current documentation for connection to Dalet NCS. The key to successful connection is to specify MOS V2.6 in the NCS configuration.

### *Set TeleScript ProNEWS options for optimal operation*

**Open the Options Dialog:** From the top level menu, select “Tools/Options” to display this dialog:

**Script**

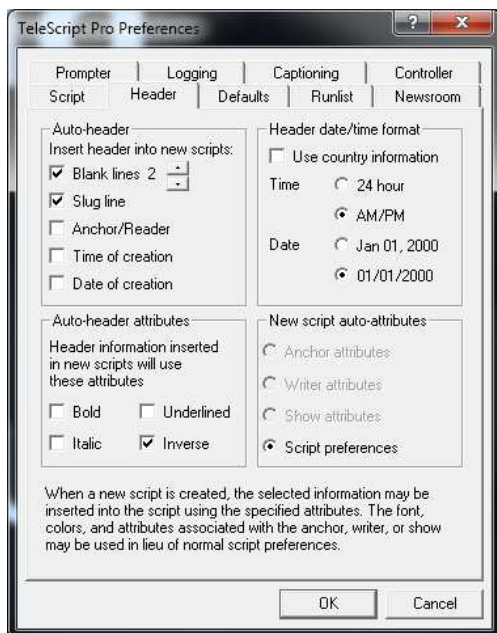




### Select these options and preferences on the Script Tab

- Uncheck “Confirm on Overwrite”
- Check “Save if Changed”
- Default Script Path should point to “C:\User\%YourUserName%\TeleScriptProData\Scripts”
- Check “Hide bookmarks in new scripts” (Bookmarks are not generally used in newsroom operation.)
- Set default Text Color, Bkg Color, Line Length and Paragraph options, and font. These defaults will be applied to unformatted TPX (gateway newsroom scripts format) as they are loaded.
- Select the display colors of the arrow, and the position of the arrow.

### Header

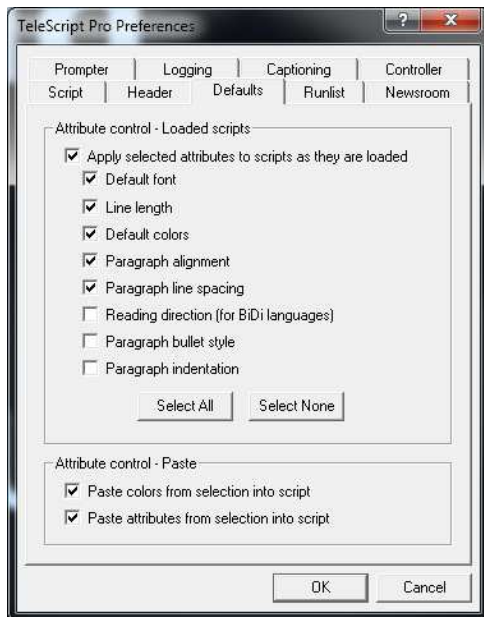


### Select these options for the Header Tab

- Insert 2 blank lines at the beginning of each TPX script
- Enter the Slug Line for each TPX script

- Select “Inverse” for Auto-header Attribute

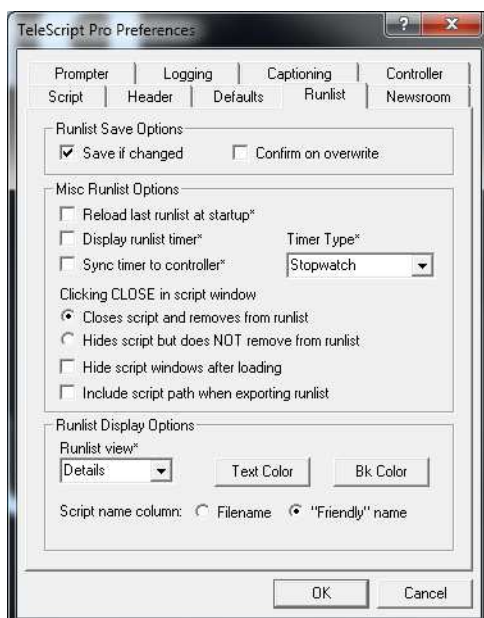
## Defaults



### Select these options for the Defaults Tab

- Check “Apply selected attributes to scripts as they are loaded”
- Check “Default font”
- Check “Line length”
- Check “Default Colors”
- Check “Paragraph Alignment”
- Check “Paragraph line spacing”
- For bi-directional fonts/languages, check Reading Direction
- Attribute Control preference are not generally applicable to newsroom operation

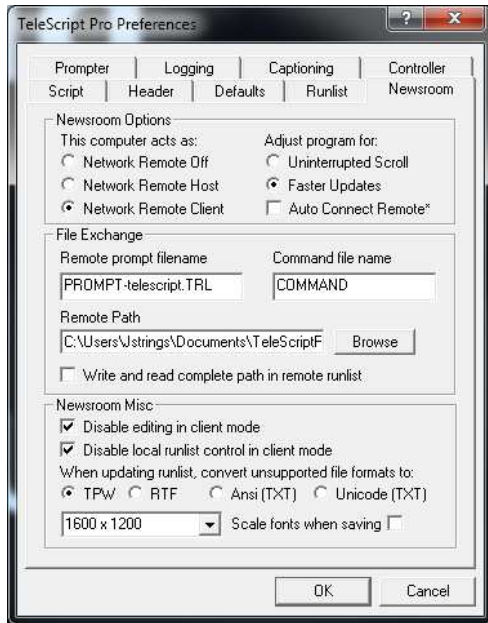
## Runlist



## Select these options for the Runlist Tab

- Check Save if changed, and Confirm on Overwrite... neither is used during active NCS monitoring
- Select “Closes script and removes from runlist”... not generally applicable to NCS monitoring
- Set default Runlist view to “Details”... the text color and bk color are user’s choice
- For Script Name Column, select “Friendly Name” (NCS file names are cryptic at best)

## Newsroom

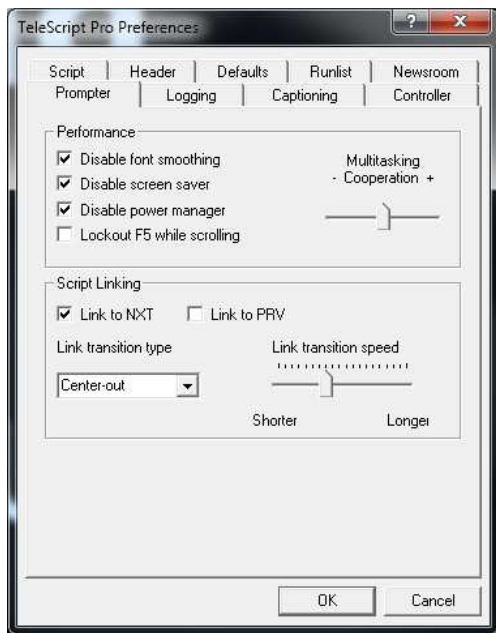


Settings in this dialog are detailed in the MOS/iNews setup documents. However, because of changes in the operation of the gateways, these changes apply.

## Select and set these items in the Newsroom Tab

- Under “Newsroom Options/This computer acts as”, select “Network Remote Client”
- Under “Adjust Program For”, select “Faster Updates”
- In normal operation, users generally select “Auto-connect at startup”. Leave unchecked for demos.
- Under File Exchange, set the Remote Prompt Filename to “PROMPT-%mos-id%.TRL”. In this case, %mos-id% is the identifier used by the NCS to identify this MOS-Object. For the setup pictured above, the “mos-id” is “telescript”.
- Command File Name is “COMMAND”
- For Remote Path, the selection must be the same as is specified in the configuration of the Gateway. The default is C:\Users\%YourUserName%\Documents\TeleScriptProData\Remote. The folder must be “visible” to both ProNEWS and the Gateway. You may use network style naming; eg., [\\DELL3500\Users\](#)... etc.
- Uncheck “Write and read complete path in remote runlist”
- “Newsroom misc” options are user’s choice. Checking “Disable editing in client mode”, and “Disable local runlist control in client mode” will prevent the operator from changing run order, or inadvertently (or purposely) changing script content.
- None of the other options in this tab apply to newsroom use.

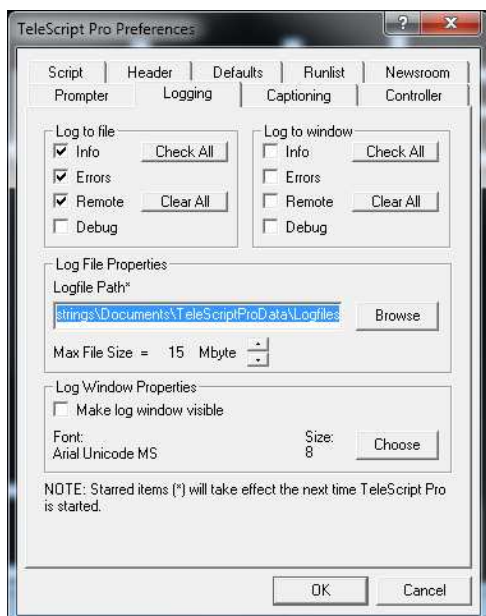
## Prompter



### Select these options on the Prompter Tab

- Check “Disable font smoothing”
- Check “Disable screen saver” (even though screen saver should have been disabled in the computer setup steps.)
- Disable power manager (this also duplicates the computer setup step.)
- Leave “Lockout F5 while scrolling” unchecked
- Leave the “Multitasking Cooperation” set to the middle position
- Under “Script Linking”, check “Link to NXT”; uncheck “Link to PRV”. (Use the controller “PREV” button to return to a previous script if required.
- Five link transitions are available: “Center Out”, “Horiz-left”, “Horiz-right”, “Vert-top” and “Vert-bot”. This is user’s choice. Many prefer “Horiz-right” for newsroom.
- Set link transition speed to middle, or slightly left of center. Experimentation will suggest the best position.

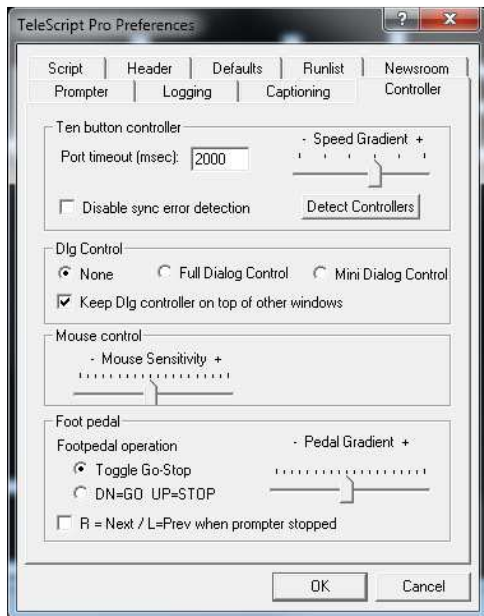
### Logging



### Select these options on the Logging Tab

- Under “Log to file”, check “Info”, “Errors”, and “Remote”. When operation is satisfactory, these may be unchecked to improve remote performance.
- Under “Log file properties”, set the Logfile path to a convenient location. The default location is “C:\Users\%YourUserName%\Documents\TeleScriptProData\Logfiles”
- The Max File Size may be increased if needed. Default is 15MB maximum before a new log file is started.

### Controller



### Select options on the Controller Tab

- Leave “Port timeout (msec)” set to 2000. Certain laptops – notoriously, Lenovo ThinkPads - require more time for ports to respond, including Windows Virtual Ports used with the USB Controller.
- Speed Gradient affects controller speed knob response. Values to the left go from stop to full speed more quickly, and vice versa.
- The “Detect Controllers” button may be used to enumerate and re-connect “lost” controllers.
- Under Dialog Control, check “None” if you prefer that the full dialog controller NOT be shown by default. Note that in newsroom setups, the dialog controller is used more often as a quick control panel... “Top of Show” commonly selected after initializing the prompter.
- Mouse control is for “emergency” scroll control... as is the dialog controller.
- The Foot Pedal properties are set in the bottom section.

**Click OK when all Options have been set.**

## Set MOS-Gateway/iNews-Gateway Options

Setting options for the MOS-Gateway is described fully in these documents:

**For MOS-Clients:**

**C:\Program Files (x86)\Telescript\TeleScript Pro NEWS\MOS-Gateway\TeleScript-ENPS.pdf**

### **For iNews connection:**

**C:\Program Files (x86)\Telescript\TeleScript Pro NEWS\MOS-Gateway\Telescript-iNEWS.pdf**

These are additional options available by Right Clicking in the Gateway notification area:

**Inject File:** This allows the user to load a MOS-Message directly. Raw mos messages are available from the ENPS News Object Manager buffer folder. Under normal circumstances, this is not necessary.

**Set Logfile Path:** Used to specify the logfile path. We suggest using the same path used for TeleScript ProNEWS logfiles.

**Display Log:** This opens a file browser in the logfile path, and displays a selected log file in the Windows Notepad.

**Test:** (MOS-Gateway Only) Disabled. Used by TeleScript Software technical support only.

**Keep On Top:** Prevents other windows from obscuring the gateway.

## **Suggested Newsroom Workflow**

1. Launch TeleScript ProNEWS
2. If MOS-Gateway or iNews-Gateway was not set to launch at startup, select the desired gateway from the AddIn Manager.
3. Click "Connect" on the selected Gateway – wait for connection.
4. In MOS-Gateway, select the desired runlist and click "On Air"; in the iNews-Gateway, navigate to the FTP folder and select the desired rundown, then Click "Air Queue"
5. In TeleScript ProNEWS, select "Tools/Newsroom/Connect". Wait while the runlist populates from scripts gathered by the Gateway.
6. If using Extended Desktop for prompting, click <Ctrl+Alt+F5>; this moves the prompting scripts to the external monitor and arranges the upcoming scripts, the runlist, and other windows conveniently on the operator's monitor. <Alt+Shift+F5> will force display of the first script in the runlist.
7. If using Cloned Desktop, select first run script in the runlist, then press <Alt + F5>. <Alt+Shift+F5> will return to the top of the run order at any time.
8. With the script displayed, press the [GREEN] button on the controller to start scrolling. Press [RED] to stop. Use the [KNOB] to control speed.

**NOTE: The script which is ON PROMPTER cannot be modified while scrolling (yellow or green dot in index arrow>. To allow modifications to all scripts, be sure to press [RED].**

Some newsrooms leave the prompter running – other shut the system down overnight, or between news presentations.

## Maintenance

1. Because many small files are created, changed, and deleted, regular defragmentation of the primary disk drive is important.
2. The Remote Folder may fill up with files if not cleaned periodically. Most operations zip and archive daily or weekly.
3. The Logfile folder may also fill up. With today's very large HDDs, it's unlikely the capacity of the disk will be exceeded, but logfiles are generally unneeded beyond a week. This folder should be cleaned regularly, or zipped and archived.
4. Because the newsroom computer system is resident on the network, regular updates of anti-virus and Windows system is important.
5. TeleScript Software provides software installer updates periodically. Patches are provided for small changes.
6. Controllers are sturdy and buttons are rated for over 100,000 presses. Cables are, as in all systems, the potential weak spot. USB connectors may wear down after frequent plugging and unplugging. On the other hand, a USB device which is rarely unplugged may develop oxide coatings on the connectors. Regular contact cleaning is suggested.